

Wall & Floor Penetration Fire Stops (FM Approval Class Number 4990)

An important technique in property loss control is the subdivision of a building into compartments and sub-compartments. This subdivision is usually accomplished by erecting physical barriers that will limit the damage caused by an event to the room of origin. The loss caused by the spread of fire damage can be minimized when effective compartmentation is incorporated into a building's design.

One method of combating the spread of fire through openings in or around barriers is to properly design and install firestopping. Firestopping is intended for use in openings in or between fire resistant walls, floor/ceiling assemblies at head of walls and at construction joints between floors and walls.

Through penetrations submitted for Approval shall be evaluated for their ability to prevent the passage of flame through or around openings in fire rated walls and floor/ ceiling assemblies and their ability to limit the transmission of heat through the assembly. In addition, no openings shall develop that permit a projection of water beyond the unexposed surface during the hose stream test.

All through penetrations shall be subjected to a fire resistance test conducted in accordance with ASTM E814 (08) "Standard Method for Fire Tests of Through-Penetrations Fire Stops" followed by a hose stream test conducted in accordance with ASTM E2226 (07), "Practice for Application of Hose Stream". An hourly rating will be assigned based on the time period for which it successfully met the performance criteria.

Through penetrations that meet the fire resistance and hose stream test criteria shall be assigned three (3) separate ratings. They are called the F rating, the T rating and the T_{FM} rating.

The F rating denotes the period of time which the firestop:

- Withstood the fire resistance test without developing any through openings through which flames can pass;
- Withstood the fire resistance test without the occurrence of flaming on the unexposed side of the assembly;
- During the hose stream test, did not develop any opening that allows the projection of water during the hose stream test from the stream to the unexposed side.

The T rating shall denote the period of time which the firestop:

- Met all the criteria of the F rating;
- Limited the transmission of heat through the assembly, as measured by thermocouples located on the unexposed side of the test assembly, as specified in ASTM E814, from exceeding a 325°F (181°C) rise above ambient temperature.

The T_{FM} rating shall denote the period of time which the firestop:

- Met all the criteria of the F rating;
- Limited the transmission of heat through the assembly as measured by an individual thermocouple placed on the unexposed side of the fire stop material positioned 1 in. (25 mm) from the penetrating item from exceeding a 325°F (181°C) rise above ambient temperature.

FM Approvals does not consider the performance of the thermocouples placed directly on the penetrating item for purposes of determining the T_{FM} rating as it is not viewed as part of the firestopping materials provided in trying to protect the opening.

All joint systems between adjacent floor, wall or top of wall sections shall be subjected to a fire resistance and hose stream test conducted in accordance with ASTM E1966, "Standard Test method for Fire Resistance Joint Systems". If successful, the assembly will be assigned an Assembly Rating based on the time period in which it has successfully met the performance criteria. Floor-to-floor and floor-to-wall joint systems shall also be subjected to the same fire test but are not required to be subjected to a hose stream test.

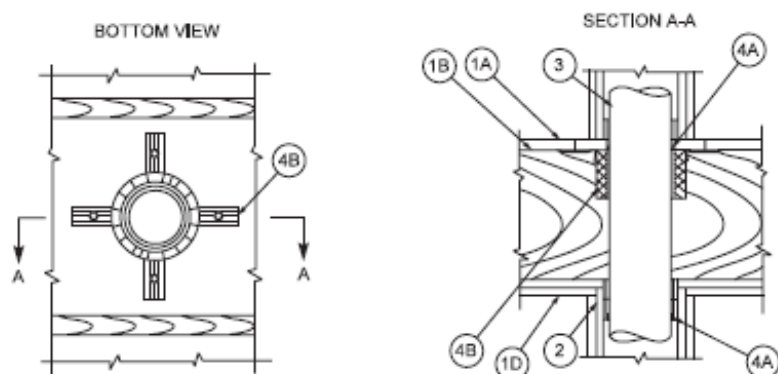
All joint systems shall be subjected to a cycling test conducted in accordance with ASTM E1966 prior to the fire resistance and hose stream test. Three (3) movement ratings are available – Type 1, Type 2 and Type 3.

Fire Stop Design 276

F-Rating = 2 HR

T-Rating = 0 HR

T_{FM} -Rating = 2 HR



1. FLOOR - CEILING ASSEMBLY. Min two hour fire rated wood joist floor assembly constructed as follows:

- a. Flooring System. Lumber or plywood subfloor with finish of lumber, plywood or gypsum wallboard (Item 1d).

- b. Wood Joists. Nominal 2 by 10 in. (51 x 254 mm) lumber joists spaced 16 in. (406 mm) o.c. with nominal 1 by 3 in. (25 by 76 mm) lumber bridging and with ends fire-stopped.
 - c. Furring Channels (Not Shown). Resilient galvanized steel furring installed perpendicular to wood joists between the first and second layers of gypsum wallboard (Item 1d) and spaced max 24 in. (610 mm) on center.
 - d. Gypsum Wallboard. Nominal 4 ft. (1.22 m) wide by 5/8 in. (16 mm) thick Type X gypsum wallboard. First layer of wallboard nailed to wood joists (Item 1b). Second layer of wallboard screw-attached to furring channels (Item 1c) and installed with all joints staggered. The steel collar (Item 3a) must be installed in the joist cavity prior to installation of the gypsum wallboard ceiling.
Max 5 in. (127 mm) opening dia. Min 0 to max 1/4 in. (6.4 mm) annular space. Nonmetallic pipe (Item 3) to be rigidly supported on both sides of the floor-ceiling assembly and to be installed midway between wood joists. Opening to be hole-sawed through flooring system and the gypsum wallboard ceiling.
2. WALL ASSEMBLY. Min 8 in. (203 mm) thick drywall partition, min 2 hour fire rated. Min 5 1/2 in. (140 mm) thick steel or wood framing with two layers of 5/8 in. (16 mm) thick, Type X gypsum wallboard at each side of wall, vertically applied with all joints staggered and secured to studs with fasteners.
3. NONMETALLIC PIPE. Max 4 in. (102 mm) polyvinyl chloride (PVC) Schedule 40 pipe for use in drain, waste or vented piping systems.
4. FIRE STOP COMPONENTS.
- a. Fill Material. Firestop material installed a min 1/4 in. (6.4 mm) depth countersunk 1/2 in. (12.7 mm) installed in the annular space between the pipe and the subfloor and a min 3/4 in. (19 mm) depth installed in the annular space between the pipe and the top plate.
 - b. Steel Collar. Max 4 in. (102 mm) dia. retaining collar with an intumescent inlay. Locate and attach the appropriate number of mounting tabs around the collar within the cavity. Use the appropriate Hilti anchors (see Hilti product literature for the proper attachment method) to secure the CP 643 Collar to the ceiling.

Hilti AG
Feldkircherstrasse 100, Box 333 , 9494 Schaan , Liechtenstein

Design Component	Product	Product Type	Listing Country	Certification Type	Class of Work
4a	CFS-IS P High Performance Intumescent Firestop Sealant	Fill Material	Liechtenstein	FM Approved	4990-Penetration Seal & Fire Stop
4b	CP 643N Firestop Collar	Collar	Liechtenstein	FM Approved	4990-Penetration Seal & Fire Stop
4a	FS-ONE MAX Intumescent Firestop Sealant	Fill Material	Liechtenstein	FM Approved	4990-Penetration Seal & Fire Stop

Hilti Inc.
7250 Dallas Pkwy, Legacy Tower, Suite 1000, Plano, Texas 75024, USA

Design Component	Product	Product Type	Listing Country	Certification Type	Class of Work
4a	CFS-IS P High Performance Intumescent Firestop Sealant	Fill Material	United States of America	FM Approved	4990-Penetration Seal & Fire Stop
4b	CP 643N Firestop Collar	Collar	United States of America	FM Approved	4990-Penetration Seal & Fire Stop
4a	FS-ONE MAX Intumescent Firestop Sealant	Fill Material	United States of America	FM Approved	4990-Penetration Seal & Fire Stop

Fire Stop Design 276

Category:	Penetration Seal
Design Number:	276
Ratings:	2, 0, 2
Construction:	Floor, Wall
Penetrant:	Plastic Pipe
Floor/Wall Material Type:	Gypsum Drywall
Joint Type:	na
Min. Wall Thickness (in.):	8
Min. Wall Thickness (mm):	203
Min. Floor Thickness (in.):	8
Min. Floor Thickness (mm):	203
Class of Work:	4990-Penetration Seal & Fire Stop